

WiFi 7 Intel BE200
Bluetooth PCI-E WiFi Card

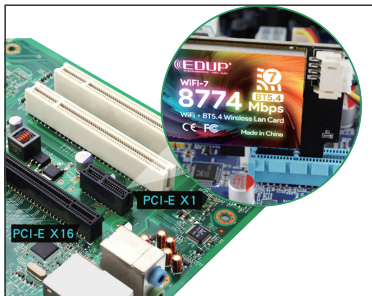
User Manual

1. Hardware Installation

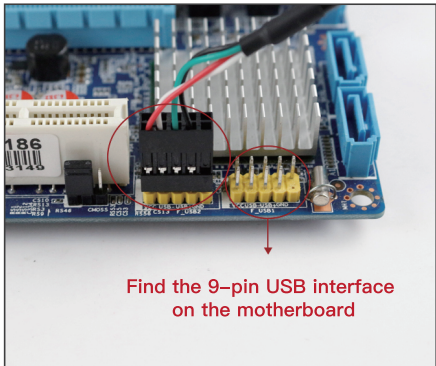
- ①. Open the side cover of the chassis and remove the chassis tailgate screws of the PCI-E card slot.



- ②. Insert the product into the corresponding card slot tightly, and either PCI-E/X1/X4/X8/X16 slots are available.



- ③. Find the 9-pin USB interface on the motherboard, insert the external wiring of the PCI-E card into the USB interface of the motherboard, and install the screws to secure the bracket.



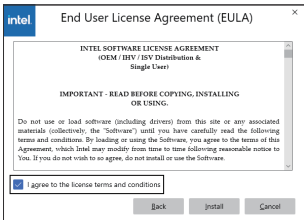
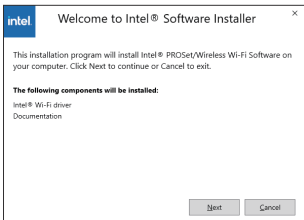
2. How to install the BE200 card driver?

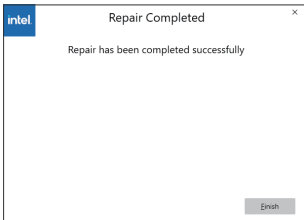
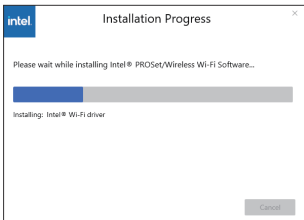
01. Scan the QR code to download the driver.

02. The downloaded file is a compressed file and needs to be decompressed. Select the corresponding system driver to install. as the picture shows:




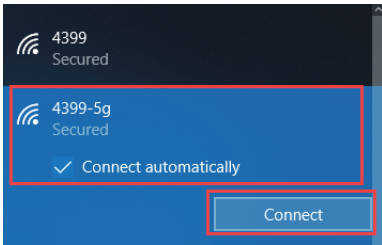
03. Click driver for Win10 64bit for next step.

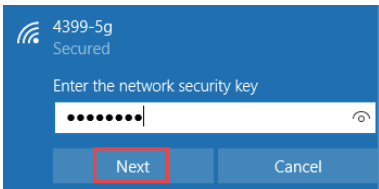




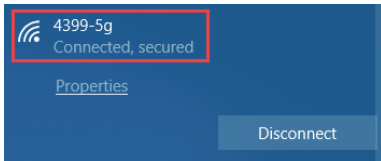
3. How to connect the BE200 card to Wi-Fi?

01. Open the Internet icon  at the lower right corner of the computer.
02. Searching and connecting the Wi-Fi you preferred on the detected Wi-Fi list.
03. Enter the Wi-Fi password to connect.



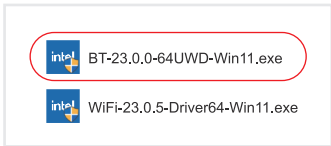


04. Finally you are connected to the Wi-Fi.

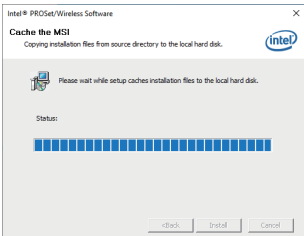
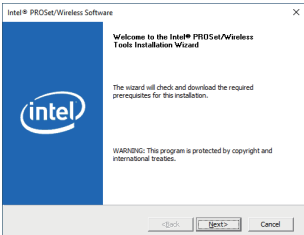


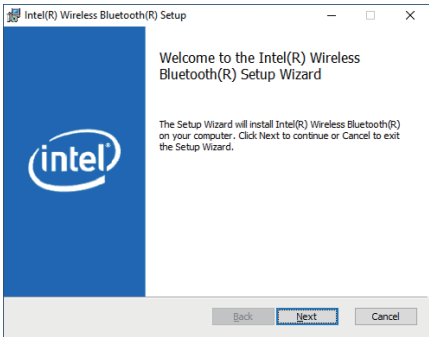
4. How to install the Bluetooth driver?

01. Select proper driver to install.

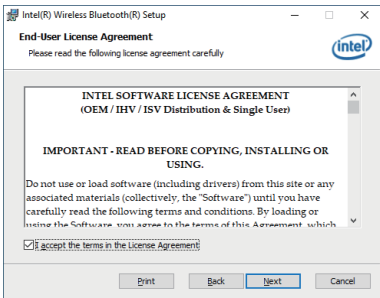


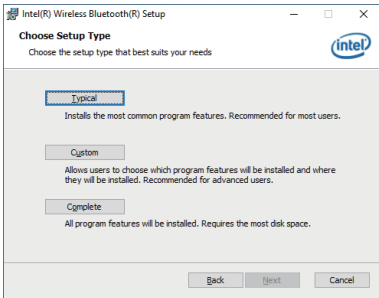
02. Double click the file to running, and click the “Next” button twice.

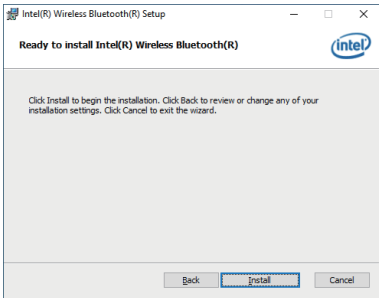


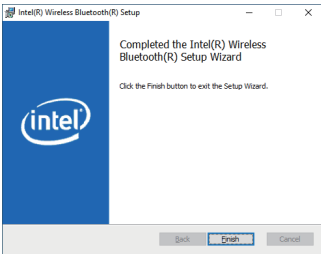
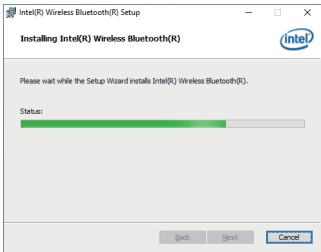


03. Please accept the terms of the agreement, then click the “Next” button.










5. How to connect the Bluetooth Earphones with the adapter?

01. Find the Bluetooth icon  in the lower right corner of the desktop.
02. Right-click the mouse, select the “Add Device”, searching the Bluetooth.
03. Make sure your Bluetooth device was turned on and ready to pair.

Add a Bluetooth Device
Allow a Device to Connect
Show Bluetooth Devices

Send a File

Receive a File

Join a Personal Area Network

Open Settings

Remove Icon

04. Bluetooth earphone will be detected below after a while.
Double click the earphone icon to pairing.

Bluetooth & other devices



Add Bluetooth or other device

Add a device



Add a device

Choose the kind of device you want to add.



Bluetooth

Mice, keyboards, pens, or audio and other kinds of Bluetooth devices



Wireless display or dock

Wireless monitors, TVs, or PCs that use Miracast, or wireless docks



Everything else

Xbox controllers with Wireless Adapter, DLNA, and more

