

USB Wireless Adapter

Quick Installation Guide

8811CU

Note: This Manual based on Windows 7

How to use?

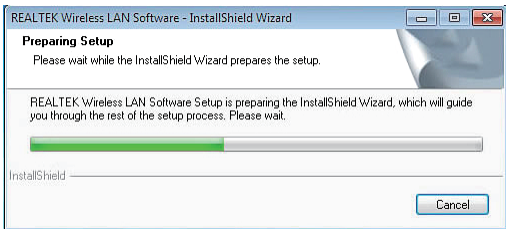
01. Scan the QR code to download the driver program.

02. The downloaded file is a compressed file and needs to be decompressed. Select the corresponding system driver to install. as the picture shows:



setup

03. Double click Setup.exe file, Software begin to initialization, then click the “Next”. There shows the installation progress.





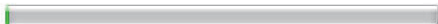
04. Do not interrupt installation, Click “finish” to finish the driver installation.The computer automatically restart.

REALTEK USB Wireless LAN Driver and Utility



Setup Status

REALTEK USB Wireless LAN Driver and Utility is configuring your new software installation.



InstallShield

Cancel



Now installing REALTEK USB Wireless LAN Driver

REALTEK USB Wireless LAN Driver and Utility



InstallShield Wizard Complete

The InstallShield Wizard has successfully installed REALTEK USB Wireless LAN Driver and Utility. Before you can use the program, you must restart your computer.

Yes, I want to restart my computer now.

No, I will restart my computer later.

Remove any disks from their drives, and then click Finish to complete setup.


< Back

Finish

Cancel

05.Plug the Wireless USB Adapter into the USB port of your PC

Wireless connection

01. Click Icon  which locates in the bottom-right corner of your computer screen,click the wireless network list and choose the SSID you preferred. and double click (Or click “Connect”).



Type the encryption key and then click "ok".

