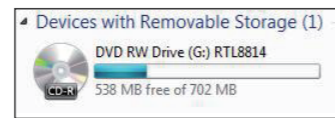


## 1900M wireless adapter Using Manual

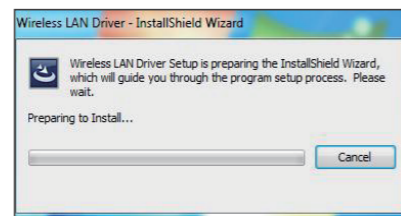


Note: This manual is based on the Windows7, please refer to the installation steps For others system.

1.Put in the CD and find windows file, please click up and find the Setup.exe .

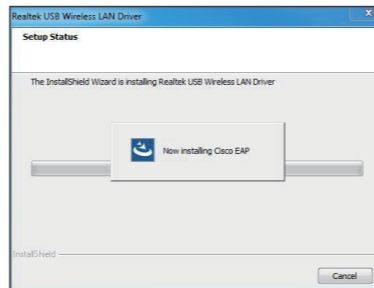


2.Double click the Setup.exe file, the driver starts to install, there shows the actual installation step screenshot.



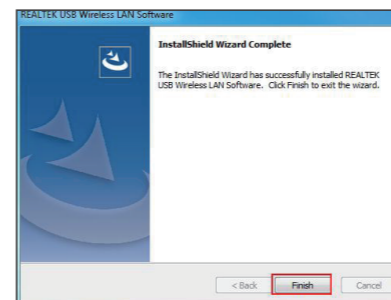
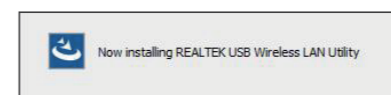
1

3.The installation status display interface is as follows.




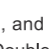
2

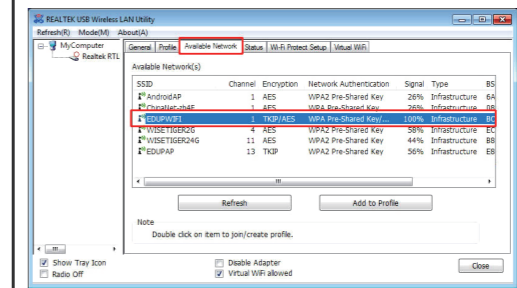
4.The installation completed interface is as follows.



Wireless connection (two ways to realize)  
Wireless connection 1:

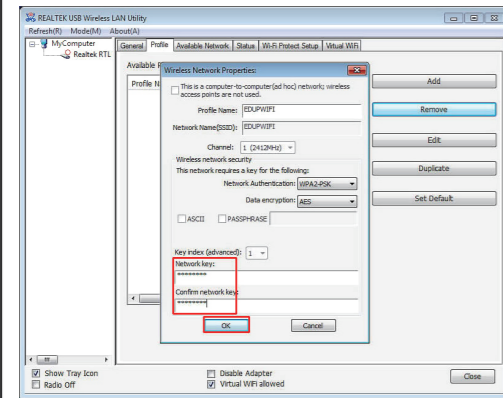
3

1.Click Icon  in the Windows system tray, which locates in the bottom-right corner of your computer screen or double click , and pops up a message and click "Available Network" Double-click the utility icon or right click the icon ,and the Wireless Network Connection window appears then double click the SSID you preferred.

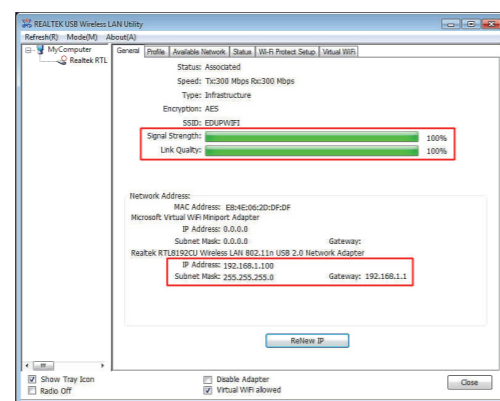



4

2.Type the encryption key that you wrote down earlier in both the Network key and Confirm network key boxes, and then click "ok".



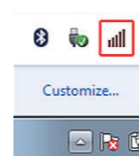
5




Note: if there is no icon , please find it in the on right bottom,it has been hide as following

6

Pictures Shows:



Wireless Connection2.

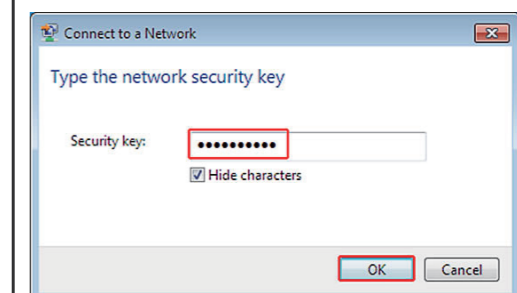
1. Click Icon  which locates in the bottom-right corner of your computer screen,click the wireless network list and choose the SSID you preferred. and double click (Or click "Connect").

7



Type the encryption key and then click "ok".

8



9

