

IEEE 802.11 ac/a/n

WLAN Client Adapter

QUICK START GUIDE

Version 1.0

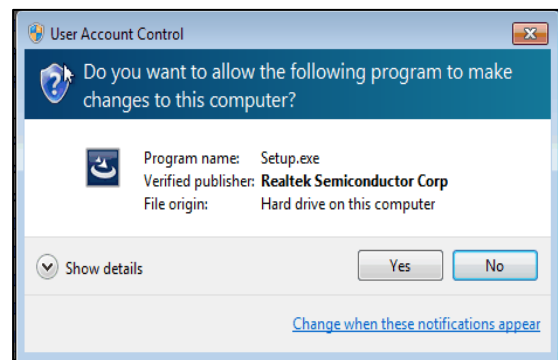
1. BOX CONTENTS

- ◆ Wireless LAN Adapter
- ◆ Quick Start Guide
- ◆ Driver CD

2. INSTALL DRIVER/UTILITY

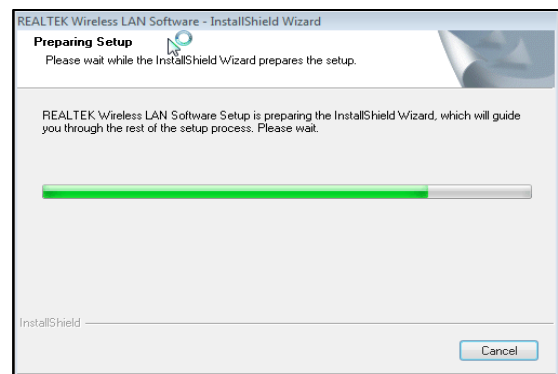
Step 1 : (Win7/8.1/10)

Insert the installation CD into your CD-ROM. Win7/8.1/10 UAC Dialog is shown. Click **Yes** to continue.



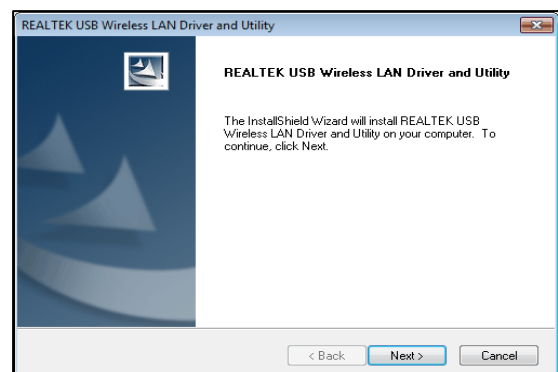
Step 2 :

Preparing Setup dialog is shown

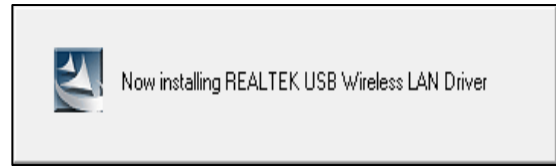


Step 3 :

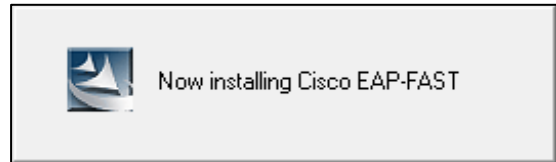
Wizard is ready to install driver and utility. Click **Next** to begin the installation



Installing & configuring WLAN driver and utility



Installing Cisco 802.1x module



Step 4 :

Click **Finish** to complete installation.
The installation will affect after windows rebooting

