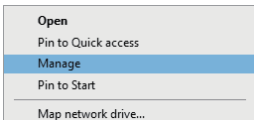


Installation Guide

WiFi 6 AX600Mbps USB Wireless Adapter

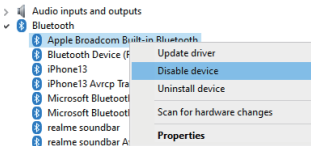
Before using the Bluetooth adapter

1. Before use, check if the computer itself comes with Bluetooth functionality, which must be set to disabled first. Otherwise, Bluetooth will conflict and the driver cannot be installed. Right-click on the "My Computer" icon, and click on "Manage" or "Device Manager."



Note: Bluetooth is only supported on Windows 10/11 (64-bit), not Windows 7 (adapter won't appear in Device Manager).

2. In Device Manager, identify whether the computer has built-in Bluetooth. If it does, right-click on Bluetooth, and click on "Disable device."



1. Scan the QR code to download the driver program.
2. The downloaded file is a compressed file and needs to be decompressed. Select the corresponding system driver to install, as the picture shows:

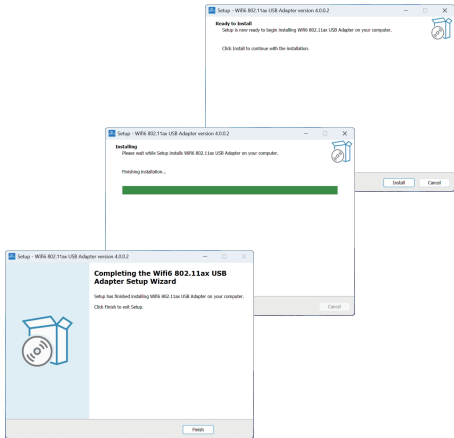


AX600




Wifi6_install_bt_CD.exe

3. Click the **Install** button, wait for the software to install, and click the **Finish** button to complete the installation



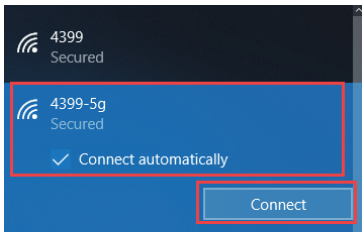
4. Connect wifi correctly then you can access to the Internet.


01. Open the Internet icon  at the lower right corner of the computer.

02. Searching and connecting the Wi-Fi you preferred on the detected Wi-Fi list.

03. Enter the Wi-Fi password to connect.


04. Finally you are connected to the Wi-Fi.



 4399-5g
Secured

Enter the network security key

[Next](#) [Cancel](#)

 4399-5g
Connected, secured

[Properties](#)

[Disconnect](#)

Frequently Asked Questions (FAQ)

Bluetooth Issues

1. Bluetooth Support Service

- Ensure that the **Bluetooth Support Service** is running:
- Press **Win + R**, type `services.msc`, and press **Enter**.
- In the Services list, locate **Bluetooth Support Service** and ensure it is running.

2. Remove Old Bluetooth Devices

- If you've used another Bluetooth adapter, follow these steps:
 1. Open **Device Manager**
(right-click "This Computer" > **Manage** > **Device Manager**).
 2. Click **View** and select **Show Hidden Devices**.
 3. Locate and uninstall any old Bluetooth devices.

Network Connection Problems

1. Slow or Unstable Internet

- Check that your network is on the **5GHz** band for better speed and reliability.
- Avoid placing the network adapter near walls or sources of magnetic interference.
- Try using a different USB port, especially one further from interference sources.

2. Adjust Router Settings

- Access your router's settings by entering 192.168.1.1 or 192.168.0.1 into your browser.
- In the router's admin page, adjust the channel and bandwidth settings to reduce interference. Choose less congested channels if possible.
- If the above troubleshooting steps don't resolve the issue, please contact our technical support for further assistance.