

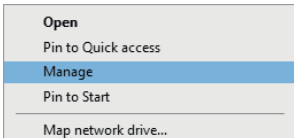
Installation Guide

WiFi 6 AX900Mbps USB Wireless Adapter

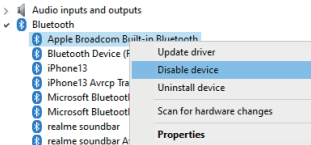
8851BU

Before using the Bluetooth adapter

1. Before use, check if the computer itself comes with Bluetooth functionality, which must be set to disabled first. Otherwise, Bluetooth will conflict and the driver cannot be installed. Right-click on the "My Computer" icon, and click on "Manage" or "Device Manager."



2. In Device Manager, identify whether the computer has built-in Bluetooth. If it does, right-click on Bluetooth, and click on "Disable device."



1. Scan the QR code to download the driver program.
2. The downloaded file is a compressed file and needs to be decompressed. Select the corresponding system driver to install, as the picture shows:



AX900

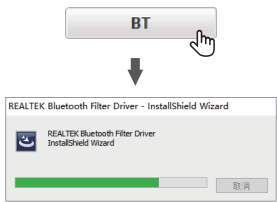


autorun.exe



1

Click the button to automatically install the software

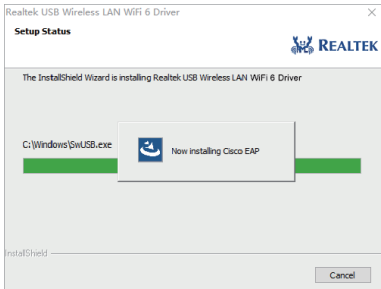


2

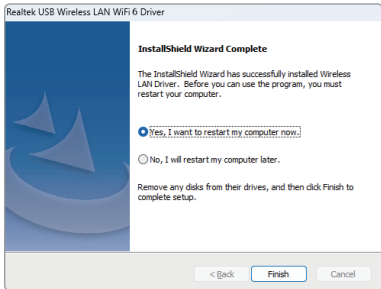
Click the button to automatically install the software




3. It may take about 1 minute to complete installation, wait for the driver to install.



4. Choose "Yes, I want to restart my computer now." to finish the process.



5. Connect wifi correctly then you can access to the Internet.

01. Open the Internet icon  at the lower right corner of the computer.

02. Searching and connecting the Wi-Fi you preferred on the detected Wi-Fi list.

03. Enter the Wi-Fi password to connect.

04. Finally you are connected to the Wi-Fi.

