

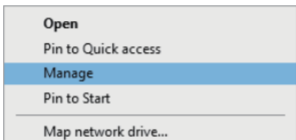
Installation Guide

Bluetooth adapter

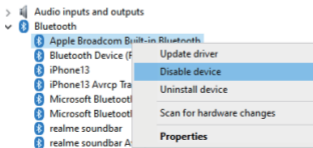
Before Using the Adapter

Check for Built-in Bluetooth:

1. If your computer has built-in Bluetooth, it must be **disabled** to avoid conflicts with the adapter.
2. Right-click on the "My Computer" icon, select **Manage**, then go to **Device Manager**.



3. In Device Manager, locate any built-in Bluetooth device, right-click, and select **Disable Device**.



How to use?

Step 1. Scan the QR code to download the driver program.

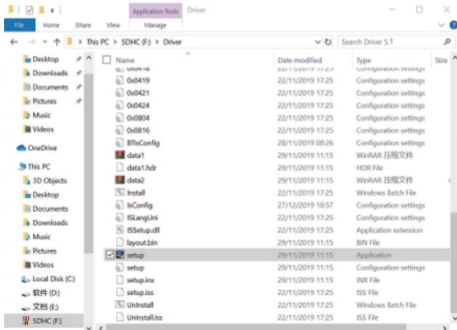
Step 2. The downloaded file is a compressed file, please unzip it.



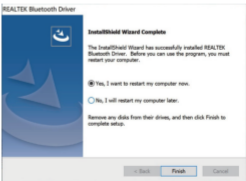
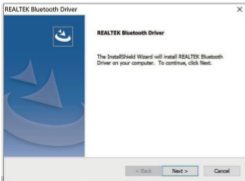
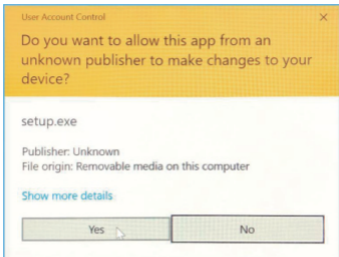
Installation Guide

Part 1, Take Windows 10 as an Example

1 . Connect Bluetooth adapter to computer, insert our disk which contains a driver file and double click **"Setup.exe"** to start



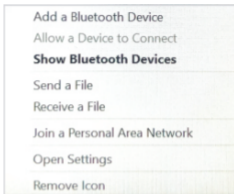
2. Select "Agree and Install the Bluetooth Driver" to start installation
After the progress bar indicates it is done, it is done, Please restart the computer.



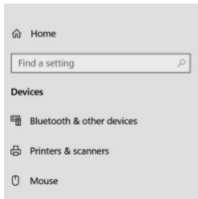
Part 2, Pair with Your Device via Bluetooth

1. Select the Bluetooth icon on bottom right of our system's tool bar, then right click to pullout a man bar.

Click **"Add a Bluetooth Device"**



2. Look through and select the Bluetooth device you want to pair with, Dual click the "Device", system will automatically start pairing, that means pairing process is done, Fell free to personalize settings at Control Interface.



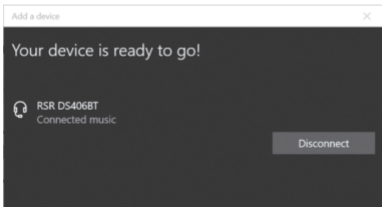
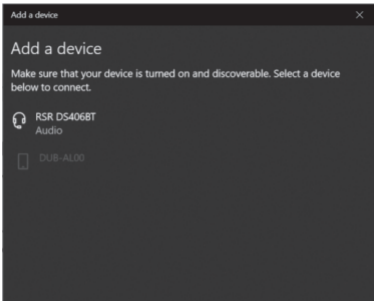
Bluetooth & other devices

 Add Bluetooth or other device

Bluetooth
 On

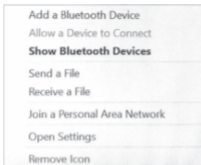
Now discoverable as "DESKTOP-HUJH3G1"

Audio

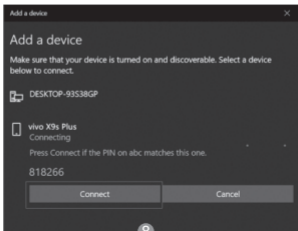


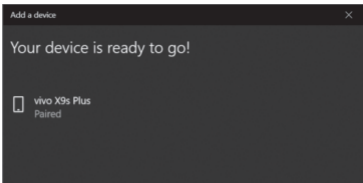
Part 3, Pair with a Cell Phone

1. Click "Add a Bluetooth Device"



2. Look through and select the cell phone you want to pair with, system will start to pair by clicking "Next". At the same time, a code will pump up on both the system and cell phone, this is certificate whether they are the right pairs or not. Click "Start to Pair" on your phone and "Next" on computer to activate pairing process.

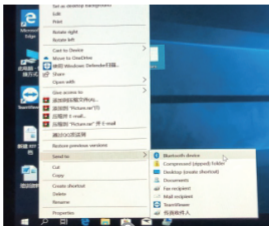




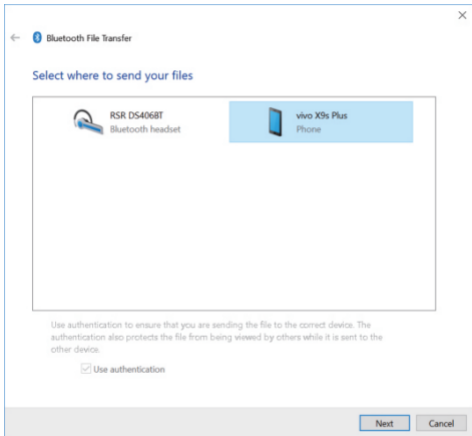
3. When it pump out a dialogue says "Your device is ready to go", that means pairing process is done, Click "Done", Fell free to personalize setting at Control Interface.

Part 4, Date Transfer

1. Right click the file which you want to transfer and select "Send to Bluetooth Device".



2. Select a receiving device, support selecting multi files simultaneously, here we take "vivo X9s Plus" as an example, click "Next".



3. On your phone, end click "Accept" to start data transfer.

