

Quick Installation Guide

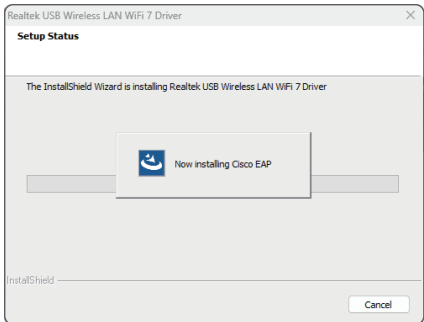
WiFi 7 BE6500 USB Wireless Adapter

8912AU

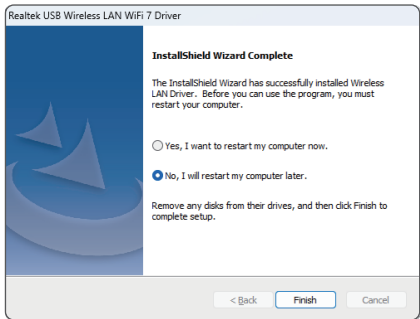
1. Scan the QR code to download the driver program.
2. The downloaded file is a compressed file and needs to be decompressed. Select the corresponding system driver to install, as the picture shows:




3. It may take about 1 minute to complete installation, wait for the driver to install.



4. Choose “No, I will restart my computer later” to finish the process.

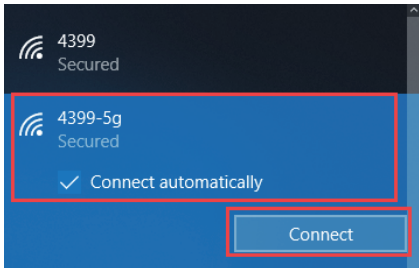


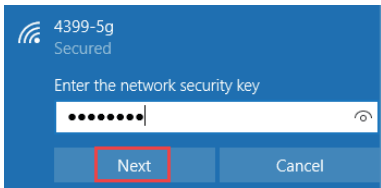
5. Connect wifi correctly then you can access to the Internet.

01. Open the Internet icon  at the lower right corner of the computer.

02. Searching and connecting the Wi-Fi you preferred on the detected Wi-Fi list.

03. Enter the Wi-Fi password to connect.





04. Finally you are connected to the Wi-Fi.

