

USB Wireless Adapter

User Manual

MTK7601

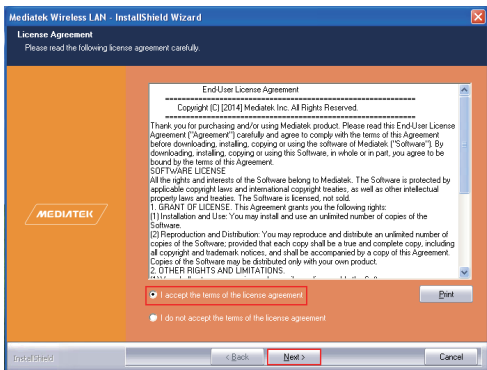
(1).Network Card Installation

Please follow the following steps to install your new wireless network card:

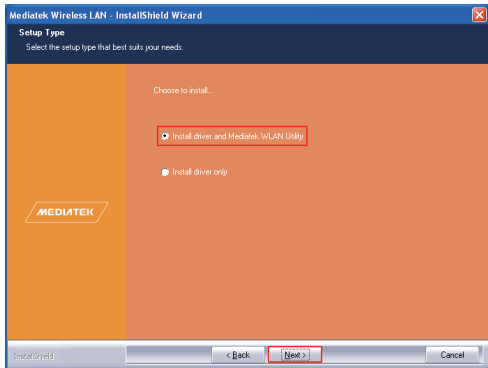
- 1.Insert the USB wireless network card into an empty USB2.0 port of your computer when computer has power on. Never use force to insert the card, if you feel it's stuck, flip the card over and try again;
2. Scan the QR code or enter the URL into the browser to download the driver.
3. The downloaded file is a compressed file and needs to be decompressed. Select the corresponding system driver to install. as the picture shows:



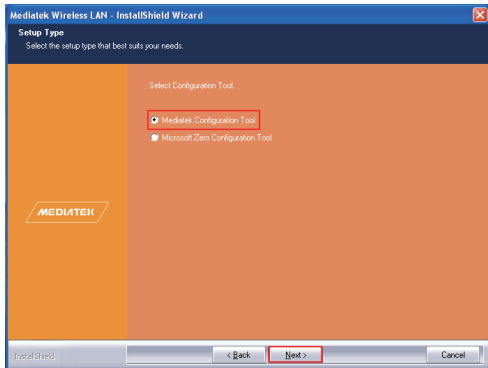
4 .Select 'I accept the terms of the license agreement', and then click 'Next';



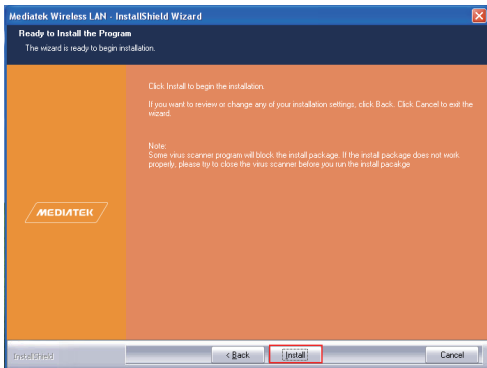
5. Select the setup type that best suits your needs, 'Install driver and Ralink WLAN Utility' are recommended;



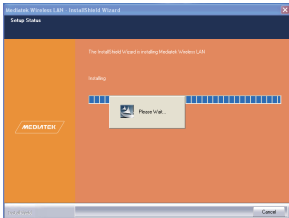
6. Click 'Next' , show the 'Mediatek Configuration Tool' dialogue, you can manage this wireless adapter both by "Mediatek Configuration Tool" and "Microsoft Zero Configuration Tool";



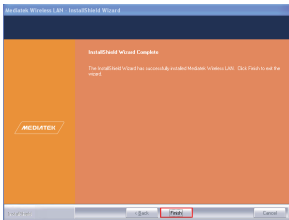
7. Click 'Next', and Show ready to install dialogue;



8. Click 'Install', and the installation is in process;

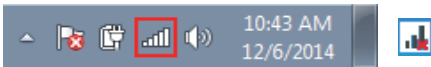


9. Finally, click 'Finish' to finish the driver installation;





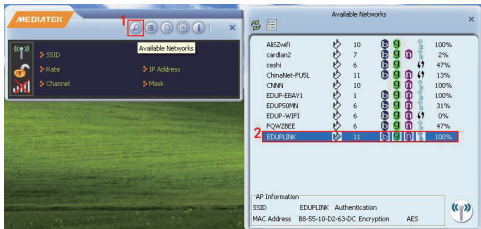
(2).Connect to Wireless Access Point

1. After installation has finished, it will try to connect to any unencrypted wireless access point automatically. If you want to connect a specific wireless access point, or the access point you wish to connect uses encryption, you have to configure the wireless network card and input the correct password to get connected to the wireless access point. Double click to open desktop lower icon

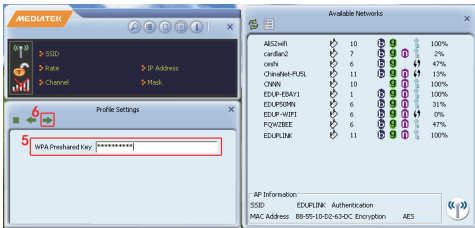
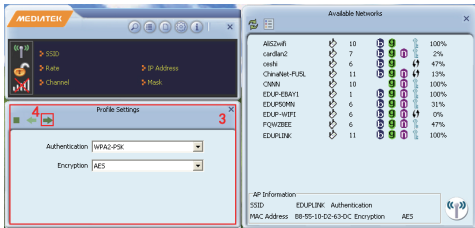




2. Displays the following picture;

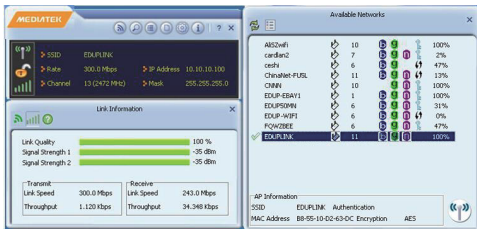
Click the icon  ; Scan available wireless access point. Scan results will display in the 'Network' zone. If you can't find the access point you wish to connect here, click the  Refresh button, until you can find your wireless access point;



3. Choose the wireless access point's SSID, and double-click it. If the AP is encrypted, you should follow the prompts to select the appropriate encryption type and enter a password;



4. After you have connected to the wireless access point successfully, you can get the detail information of connected access point, such as status, IP address, speed and so on. Click the , then the , you will see the signal quality and signal strength information.



The screenshot displays the MediaTek wireless utility interface. The main window shows connection details for the selected network 'EDUPLINK'.

Connection Details:

- SSID: EDUPLINK
- Rate: 300.0 Mbps
- Channel: 13 (2472 MHz)
- IP Address: 10.10.10.100
- Mask: 255.255.255.0

Link Information:

- Link Quality: 100 %
- Signal Strength 1: -35 dBm
- Signal Strength 2: -35 dBm

Transmit/Receive Statistics:

Transmit		Receive	
Link Speed	300.0 Mbps	Link Speed	243.0 Mbps
Throughput	1.120 Kbps	Throughput	34.348 Kbps

Available Networks:

Network Name	Channel	Signal Strength	Security	Encryption	Auth	Power
AKS2WiFi	10	100%	WPA2	PSK	WPA	100%
carden2	7	2%	WPA2	PSK	WPA	2%
ceshi	6	47%	WPA2	PSK	WPA	47%
ChinaNet-FUL	11	13%	WPA2	PSK	WPA	13%
CHNN	10	100%	WPA2	PSK	WPA	100%
EDUP-EBAY1	1	100%	WPA2	PSK	WPA	100%
EDUP-SOMIN	6	31%	WPA2	PSK	WPA	31%
EDUP-WIFI	6	0%	WPA2	PSK	WPA	0%
FOUWZBEE	6	47%	WPA2	PSK	WPA	47%
EDUPLINK	11	100%	WPA2	PSK	WPA	100%

AP Information:

- SSID: EDUPLINK Authentication: AES
- MAC Address: B8-55-10-D2-63-DC Encryption: AES