

User Manual

8723b

Note: This Manual based on Windows7

Driver download QR code:



Driver download URL:

[https://admin.szedup.com/storage/default/
20240730/ep-8568-driver-51cb7f83831739
0acc9ded9f880c77195921c11e.zip](https://admin.szedup.com/storage/default/20240730/ep-8568-driver-51cb7f838317390acc9ded9f880c77195921c11e.zip)

I. WiFi Adapter Driver Installation Steps:

01. Scan the QR code or enter the URL into the browser to download the driver.



rtl8723b_bt_win.zip



rtl8723b_linux.zip



rtl8723b_wifi_win.zip



RTLWlanU_macOS
(13).rar

02.

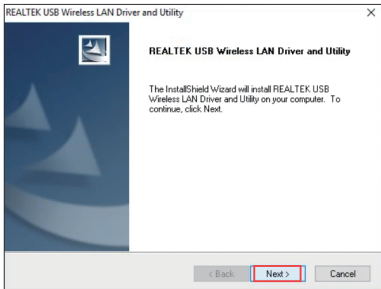
Step 1: The downloaded file is compressed and needs to be decompressed. Extract the contents using a file decompression tool such as WinRAR, 7-Zip, or the built-in extractor on your system.

Step 2: Once decompressed, locate the installation file within the extracted folder.

Step 3: Double-click on the installation file to begin the installation process.



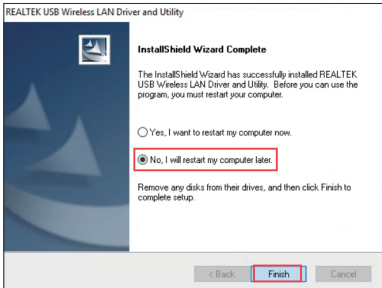
03. Click "Next" .




04.The installation show as below:



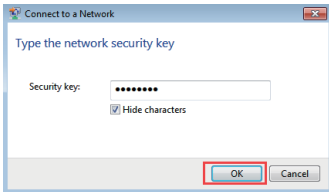
05. Choose “No, I will restart my computer later” and click “Finish” .



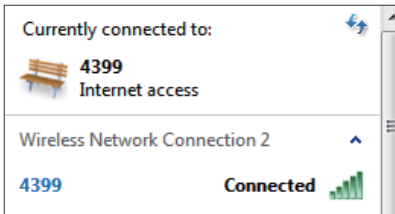
06. WiFi Adapter Connection Steps:

- Open the Internet icon  at the lower right corner of the computer.
- Searching and connecting the Wi-Fi you preferred on the detected Wi-Fi list.
- Enter the Wi-Fi password to connect.





d. Finally you are connected to the Wi-Fi.



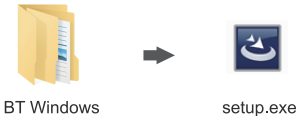
II. Bluetooth Adapter Driver Installation Steps:

(Plug the Bluetooth Adapter before installing the driver)

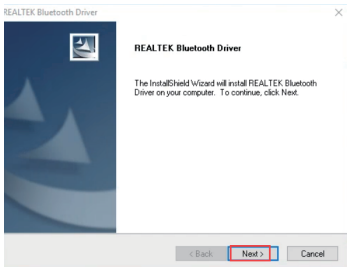
01. Unzip the file



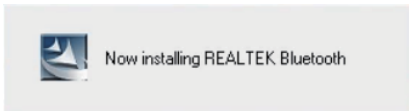
02. Find "setup. exe", and double-click to install.



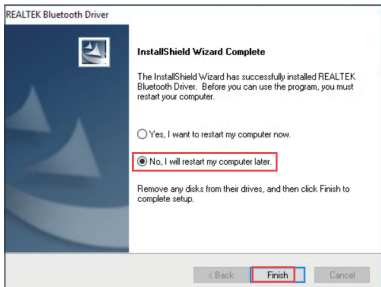
03. Click "Next" .



04.The installation show as below:

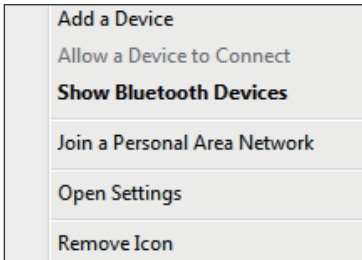


05. Choose “No, I will restart my computer later” and click “Finish” .



06. Bluetooth Adapter Connection Steps:

- Find the Bluetooth icon  in the lower right corner of the desktop.
- Right-click the mouse, select the "Add Device", searching the Bluetooth.
- Make sure your Bluetooth Wi-Fi device was turned on and ready to pair.



- d. Bluetooth earphone will be detected below after a while.
Double click the earphone icon to pairing.



