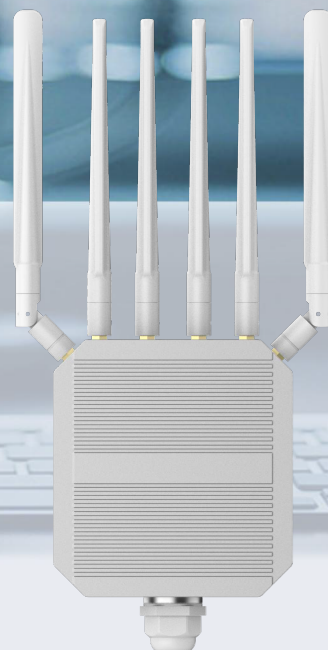


## Outdoor 5G CPE

# EP-N9573

## 5G Wireless Data Terminal



### Overview

**5G Smart Router System (CPE)**, is based on brand-new embed platform, it can be satisfied with growing-up mobile **connections** requirements and provides the fast speed beyond your imagination.

The CPE is compatible with NSA/SA dual-mode, suits to all network types all over the world, it means you just plug and play it and enjoy the ultra-fast broadband connection at any places.

Outdoor 5G, the waterproof level is up to IP66, the appearance is exquisite and beautiful, and it is suitable for various installation methods: wall hanging, pole holding.

### Features

**5G NR** Qualcomm™SDX62  
modem

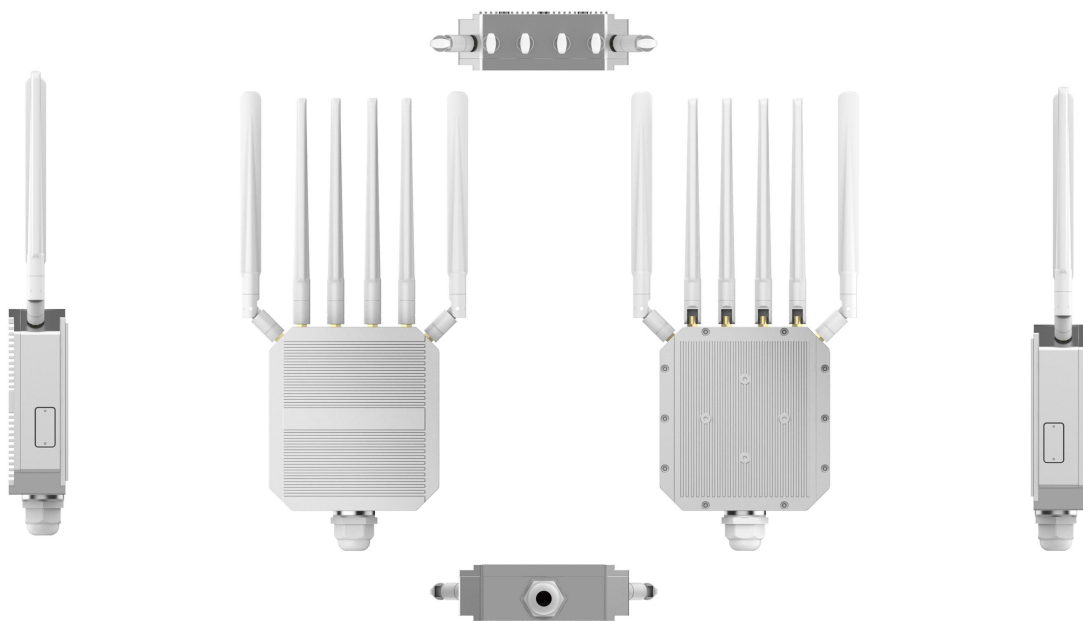
**IP66** Waterproof grade IP66



**2.5G Port**  
High-speed interface

**POE** Standard 48V POE power  
supply

## Appearance



## Application scenarios



Village



security monitor



pier



Enterprise



## Technical Specifications

Model	EP-N9573
CPU	IPQ5018+SDX62
WiFi Frequency	2.4G/5.8G
WiFi Standard	2.4G:802.11b/g/n/AX ,5.8G:802.11b/g/n//AC/AX
WiFi	2.4GHz :600Mbps ,5.8G:2400Mbps
5G NR	<b>3GPP Release 16 NSA/SA operation, Sub-6 GHz</b>
5G Network Mode	NSA/SA
5G/4G Data Rate	5G SA Transmission Speed:2.1Gbps/900Mbps (up to ISPs) 5G NSA Transmission Speed:2.5Gbps/650Mbps (up to ISPs) LTE : Down 1.0 Gbps; UP 200 Mbps
5G Frequency Bands	<b>5G NR NSA</b> n1/ 2/ 3/ 5/ 7/ 8/ 12/ 13/ 14/ 18/ 20/ 25/ 26/ 28/ 29/ 30/ 38/ 40/ 41/ 48/ 66/ 70/ 71/ 75/ 76/ 77/ 78/ 79 <b>5G NR SA</b> n1/ 2/ 3/ 5/ 7/ 8/ 12/ 13/ 14/ 18/ 20/ 25/ 26/ 28/ 29/ 30/ 38/ 40/ 41/ 48/ 66/ 70/ 71/ 75/ 76/ 77/ 78/ 79 <b>MIMO</b> Downlink: 4 × 4 MIMO on n1/n2/n3/n7/n25/n38/n40/n41/n48/n66/n77/n78/n79
4G&3G Frequency Bands	<b>Downlink Cat 19/ Uplink Cat 18</b> <b>LTE-FDD</b> B1/ 2/ 3/ 4/ 5/ 7/ 8/ 12/ 13/ 14/ 17/ 18/ 19/ 20/ 25/ 26/ 28/ 29/ 30/ 32/ 66/ 71 <b>LTE-TDD</b> B34/ 38/ 39/ 40/ 41/ 42/ 43/ 48 <b>MIMO</b> DL: 4 × 4 MIMO on B2/B4/B5/B12/B13/B14/B17/B25/B26/ B29/B30/B66/B41/B42/B43/B48/B71 <b>WCDMA</b> B1/ 2/ 4/ 5/ 8/ 19
Modulation Mode	<b>5G:</b> GMSK/8PSK/BPSK/QPSK/16QAM/64QAM/256QAM <b>WIFI:</b> 1024-QAM / OFDMA
Dimension	145X130X45MM
Interface	1*10/100M/1000/2500 LAN 1 Reset Button 1 SIM card slot(4FF SIM card Support SIM/USIM/UIM, standard 6 PIN SIM card interface, support 3V SIM card and 1.8V SIM card: internal)
Reset	Reset (Long press 10 seconds to restore the factory settings)
LED Indicator	battery power,RF Signal, SIM Signal,SYS Signal

Power Consumption	< 24W (POE 48V/1A)
Environment	Operating Temperature: -20°C ~ +50°C Storage Temperature:-40°C ~ +70°C Humidity: 5% ~ 95% (Non condensation)
Weight	1.8KG (Includes color box accessories)

## Network Connection Diagram

### What's in the package?

---

- One (1) 5G CPE Router (EP-N9573)
- One (1) 1m Cat6 Ethernet cable
- One (1) POE Power
- Quick Start Guide

\*: under development / in progress.

Maximum wireless signal range derived from IEEE standard 802.11 specifications. Actual data throughput and data over distance will vary. Network conditions and environmental factors, including volume of network traffic, building material and construction, and network overhead, result in lower actual data throughput rate and wireless coverage.