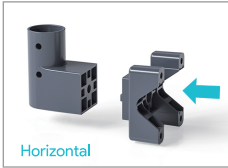
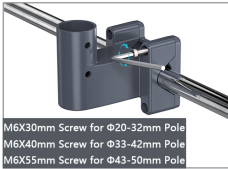
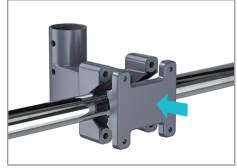
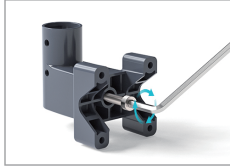


Installation steps

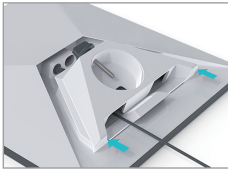
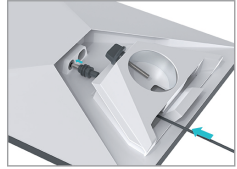
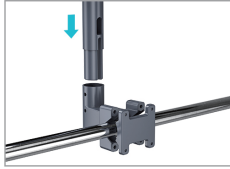
Horizontal mounting



1. Splicing of brackets horizontally aligned with slots

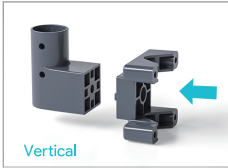


4. Select the appropriate length of screws according to the size of the transverse bar and tighten them.

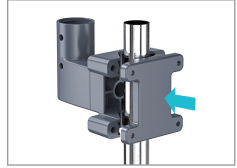
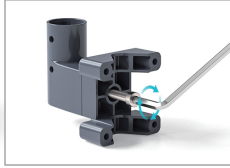


Installation steps

Vertical mounting



1. Align the bracket vertically in the slot for splicing



4. Select the appropriate length of screws according to the size of the transverse bar and tighten them.

